

HenryGlass[®]

APERTURE CONTEMPORANEE

COMPANY PROFILE_2022

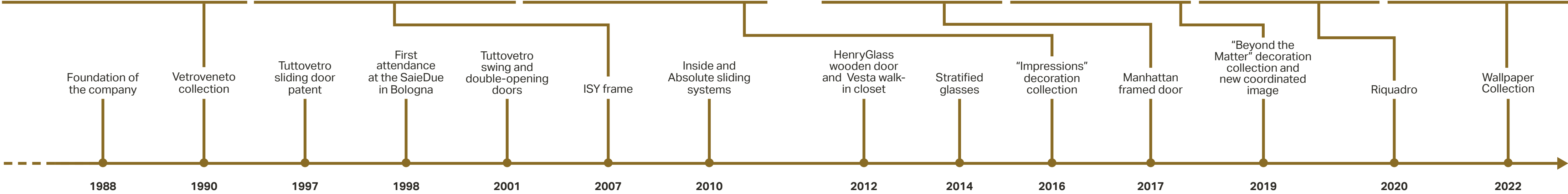
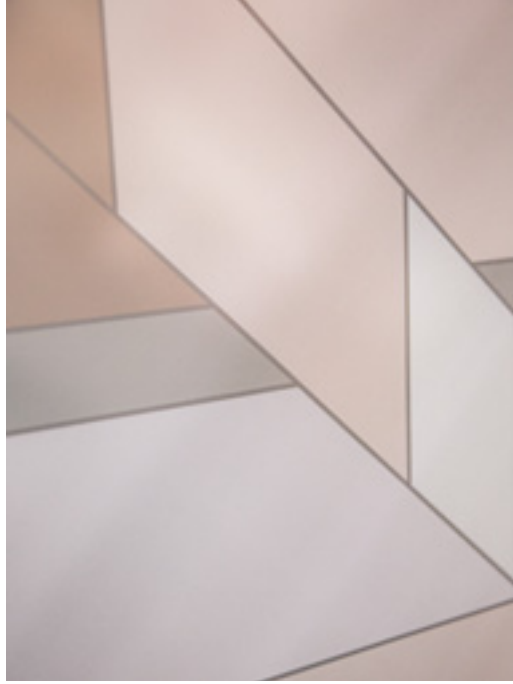


HenryGlass was born in a territory full of tradition and culture, placed between Venice, historic homeland for the glass, and the interland of the Palladian Villas.

In Mansuè, in province of Treviso, from the raw leaf the door becomes anything the client wants: a glass wall, a boiserie and many other things.

The product is able to satisfy every need for both the lovers of the classic and the ones who likes the modern and contemporary design. The final outcome is a tailor made product, a perfect combination of technique and aesthetic.

Since the entire cycle of the doors takes place in the factory, the top quality is guaranteed.





:vision

We dream that there may be an open door for each person.

A **tailor made door** that satisfies the tastes, the personality, the needs and the functionality. A door not only signed by HenryGlass but also by the same customer as an active part in the design of his own product.

Our aim is to design opening systems that connect the environments but also people among them.

It's a **conceptual opening before that being spatial**.



:mission

The aims we have set will lead us to **consolidate the Italian market** and to discover the foreign one. Areas already reached as France, Switzerland, Germany, UK, Russia, USA and India will be increasingly enhanced with the aim to **open new markets**.

Our path want to cross more and more with the **design approach** related to **architectural firms** and to the **contract** sector by realizing technical and aesthetic **high range** solutions to better meet the refined needs of a increasingly demanding clientele.

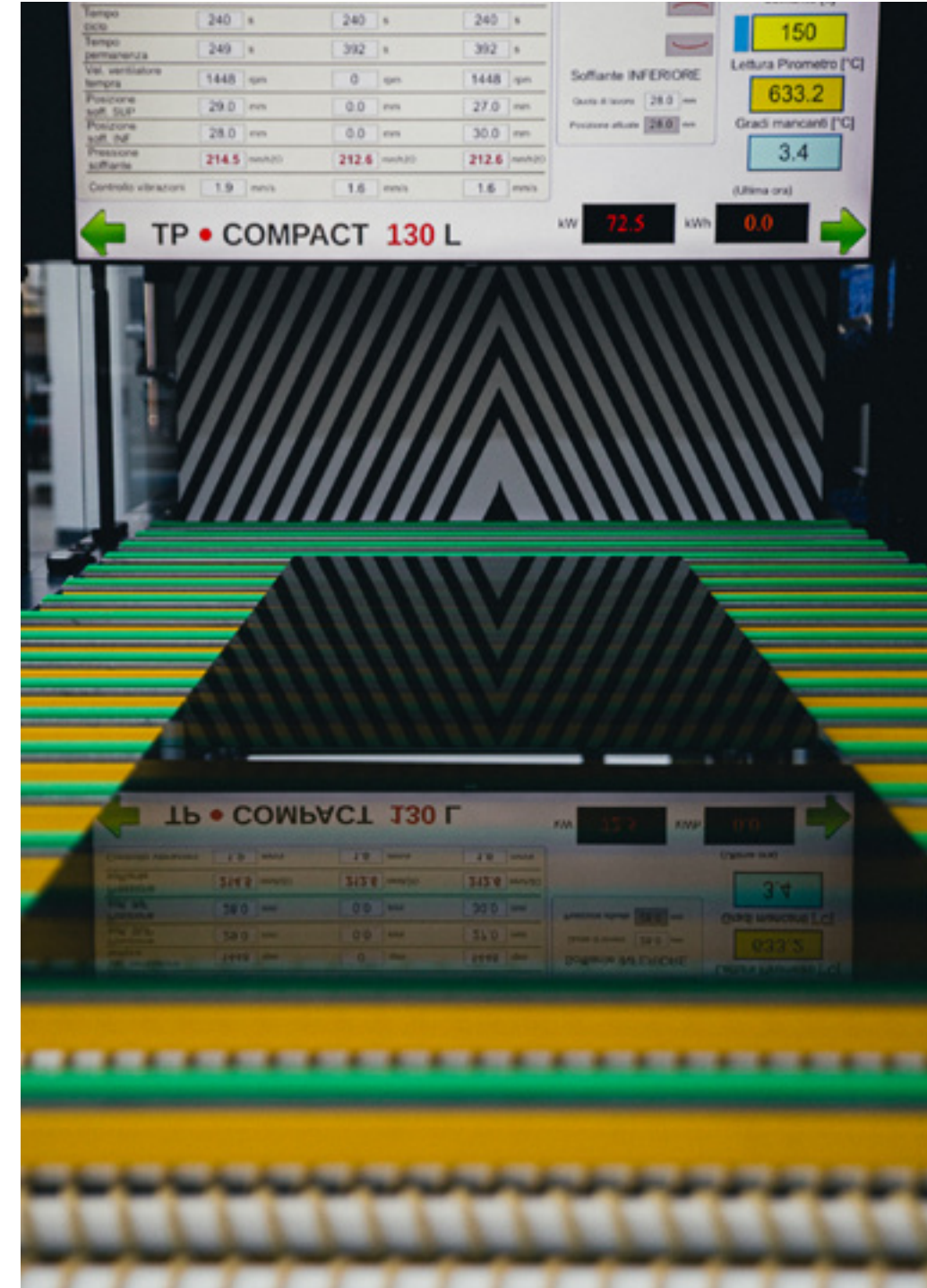
:art and culture

Art and **culture** of the glass are the milestone on which HenryGlass found its own identity and build its future, by making the ancient craftsmanship contemporary.



:technologic innovation

Technological innovation is an essential dowel for the company because only through continuous investments it is possible to transform the craft knowledge in forefront industrial know-how.



:flexibility and personalization

The **flexibility** and the **personalization** of the product are other pivotal values for HenryGlass, whose goal is to be always in line with the market and with the needs of the Customer



:eco-compatibility

Eco-compatibility is an element we care about very much; for this reason we use recyclable materials, we produce in a regime with a closed water cycle and we are almost autonomous from the energetic point of view.



:the people as the focus

For HenryGlass, People are the focus: collaborators and Customers. This makes for the **quality of the service to be the highest in every moment**: from the first contact up to the after-sales assistance.

A competent technical department **gives support to the designing and problem solving** concerning the feasibility of the different systems.

HenryGlass dealers are supported by a **dense network of collaborators**, always welcome and kept updated with **training** days organized for their needs.



:tailor made

The possibility to decorate the glass is an integral part of the HenryGlass offer. The several decorative techniques permit to **personalize in a creative way** everyone's own environment trough the wide range of the proposed graphics and decorative solutions. However nothing prevents the Client from proposing a **decoration or a personal logo** and personalize it to the utmost.

The different chromatic effects suggested by the decorations find **match with the accessories finishes** that complete HenryGlass opening Systems. In this way the projects will be always **consistent in every detail**.

The personalization is guaranteed even in the sizes. Standard heights and widths don't exist: **every door is different from the other and it is tailor made**.

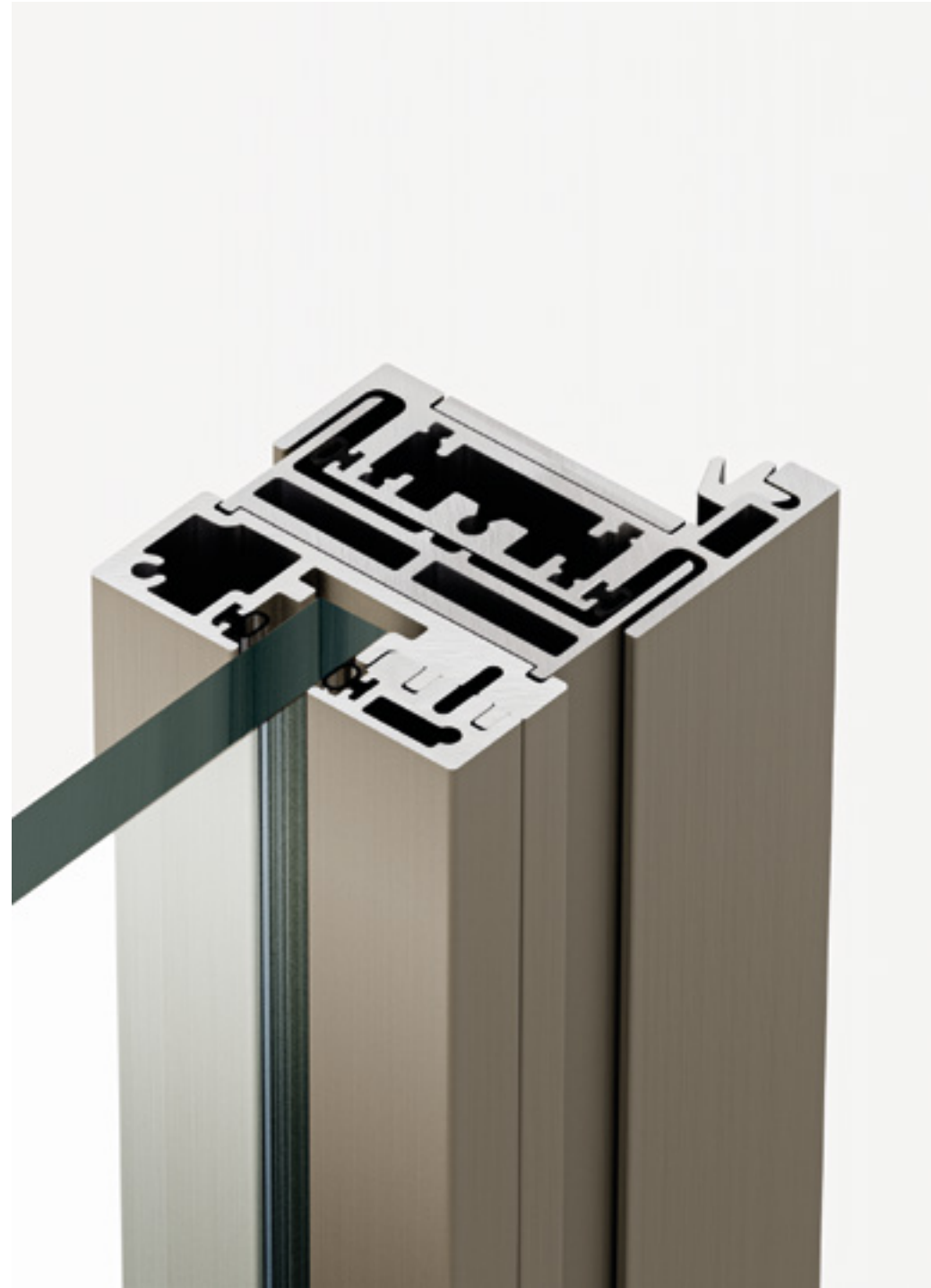


:planning and quality

HenryGlass opening systems are subject to continuous **technological and stylistic research** that aims to introduce innovative functional and aesthetic projects.

Exclusive technical systems, the various implementation of the accessories with a new design, the creation of unique finishes and decorations make each HenryGlass door an **ad-hoc project** that can fit harmoniously in every environment.

The common characteristic within the proposals is the **quality of the glass**, that ensures reliability and duration over time. All HenryGlass glasses, even the stratified ones, are subject to the tempering process in order to ensure security and a longer resistance compared to normal glass.



:customized industrial processes

A tailor made product has to be placed side by side with highly customized productive processes. That's why HenryGlass **machinery are designed specifically for its needs** and with an on-demand management system that can respond to the complexity of the production process.

Some examples are a state-of-the-art working center, the stratification line, the internal tempering process, the processes of realization of the exclusive decorations.

:safety and certifications

All HenryGlass glasses are tempered according to the **UNI EN 12150 and 12600 standards** and are certified for their quality. Internal **crash tests** and **periodic tests of breakage** carried out in specialized centers guarantee the safety of HenryGlass products

Tutti i vetri HenryGlass sono certificati secondo le norme **UNI EN 12150** per quanto riguarda la tempera e **UNI EN 14449** per quanto riguarda la stratifica. Prove di crash test ed altri test di sicurezza interni realizzati periodicamente attestano la **sicurezza dei prodotti HenryGlass** e la bontà dei processi con cui vengono realizzati.



:HenryGlass design

Continuous **research** and **experimentation** made by HenryGlass have made design of **sophisticated and exclusive** systems possible and in some cases even **patented**.

The solutions devised by HenryGlass have allowed to solve technical problems without neglecting the aesthetic aspects. Examples are the exclusive collections of **frames** and the **Inside sliding system** and the **Pivot Door** that largely satisfy all the most current design requests. Even the **full-height hinge** is among the exclusive HenryGlass solutions guaranteeing the door opening up to 180 ° for the swing door in an elegant and refined design

**:case
studies**



:case study_1

PARIGI – France
David Thibaut Architecte
Office set-up

For this project of the FONCIERE INEA building, 21 Avenue de l'Opéra in Paris, the architect chose to give maximum brightness and elegance to the prestigious offices by installing the Manhattan glass doors combined with fixed walls.

The titanium finish of the profiles and accessories, in addition to enriching the doors and systems with a golden tone, matches perfectly with the Macramé decoration; it gives the rooms a delicate charm, precious even if just hinted at, with a timeless taste.



:case study_2

LUBIANA – Slovenia
PROGETTO: Kreadom architecture studio
Private apartment

The space, designed and elegantly furnished, is distinguished using glass partition walls, a very interesting solution to meet the needs of home living.

Glass will always be able to impress for its great versatility and the brightness that brings into the room.

For the subdivision of the functional areas, the architect chose a large, framed Manhattan sliding door with Trame decoration in slate finish, obtaining an attractive and contemporary space.



:case study_3

MILAN – ITALY
Architect: Nicola Gallizia
Showroom Via Larga 3
HenryGlass, Kristalia, Penta Ligh
and TM Italia Store

Representative example of the strategic path that the company is making is the show-room ViaLarga3 situated in the heart of Milan, in which precious combinations of materials and colours coexist, giving life to an idea of balanced and personal furnishing.

In this space the door, the boiserie and the partition systems finally acquire prestige and value equal to the furnishings, as they are designed in full harmony with the rest of the set-up to create an integrated and coherent project.

The vision consists in completely tailored and customizable products, suitable for any type of environment, from the simplest and most refined to the most demanding and elegant. The focal point of the design of the vertical walls of the showroom is to be able to combine the doors with the wall panels, which allow a unique continuity able to embellish any type of environment.



:case study_4

PALERMO – Italy
Arch. Michele Longo, Arch. Davide Cammarata,
Arch. Nicola Gallizia
Showroom Longho
Glass and wooden sliding doors, boiserie and
wooden swing door and bathroom glass wall

Inside the elegant Longho showroom in Palermo, dedicated to furniture, precious combinations of materials and colors coexist that help to outline a clear and precise taste line, without compromise.

In this showroom, the door, the walls and the paneling acquire the same prestige and value as the furnishings, as they are designed in full harmony with the rest of the setting in an integrated and coherent project vision.

HenryGlass' vision is that of completely tailor-made and customizable products for a very demanding and refined clientele. The focal point of the project is the combination of doors and boiserie to create continuity, enhancing some particular perspectives. As for the wood paneling, the architect chose the Rovere Grigio finish; when looking at the pictures, it is easy to understand that wood is wasted when used only as a floor.

On the other hand, for the large glass partitions, they chose clear glass with Lino decoration, delicate and not at all invasive.



:case study_5

NEW JERSEY – USA
Architect: David Bartz
Private house
Sliding doors in the living area
and bathroom fixed glass panel

The project of this beautiful apartment overlooking New York was entirely followed by the Architect David Bartz who divided the space with elegant HenryGlass partitions.

For the dining room, a mutiple Manhattan Line sliding doors system has been chosen, with its black profiles createsharpscontrastswiththeneutralsurroundings. Avenue handles are precious details that enrich the product by obtaining majesty for this elegant open-space. The exclusivity of Linen decoration creates an amazing optical effect arousing curiosity in those who look at it in discovering what there is beyond. For the shower the framed glass partition with black finish, custom made using Linen texture, perfectly adapt itself on this relaxed and intimate space.

Outside wall Manhattan sliding doors give elegance and refinement to the hallway where the smoky glass stand out from the neutrality of the other spaces of the house

:case study_6

UDINE - ITALIA
Private house
Sliding doors system between the kitchen
and living areas



The Vitra Inside System in its highest expression of purity and brightness.
New image solutions to enrich the everyday: external wall sliding doors with tempered clear glass and sliding track to enclose and divide the kitchen from the living room area.

Ideal for separating without dividing, the system of external sliding doors recessed in the false ceiling helps you make the most of the space as the doors can be fully open when needed.

HenryGlass s.r.l.

via Portobuffolè, 46 A/B
31040 Mansuè (TV) Italy
tel. +39 0422 209411
fax +39 0422 209494
www.henryglass.it
info@henryglass.it

HENRYGLASS.IT